



Mayville Alexander Drive, Douglas, Isle of Man, IM2 3QN
Asking Price £595,000



- Substantial period semi-detached home with charming original features and character throughout
- Beautiful mature gardens to the front, side, and rear offering a private and tranquil outdoor space
- Five bedrooms with an optional sixth bedroom on the ground floor complete with en-suite – ideal for guests or multi-generational living
- Detached garage, providing convenience and additional storage options
- Four spacious reception rooms including a sunroom and formal dining area, perfect for versatile family living and entertaining



Mayville Alexander Drive, Douglas, Isle of Man, IM2 3QN

Nestled in a highly sought-after location, this charming period semi-detached residence offers an abundance of space, character, and versatility—perfect for growing families or those seeking multi-generational living. Rich in original features and thoughtfully extended over time, this substantial home provides a rare opportunity to own a piece of timeless elegance with modern comfort.

Boasting five generously proportioned bedrooms, with the added bonus of a potential sixth bedroom on the ground floor complete with en-suite facilities, the property offers exceptional flexibility for guest accommodation, elderly relatives, or even a home office.

The layout is both functional and flowing, with four spacious reception rooms, including a cosy living room with characterful features, a formal dining room perfect for entertaining, and a light-filled sunroom overlooking the gardens. The breakfast kitchen acts as the heart of the home, offering ample space for day-to-day living and family gatherings alike.

Set on a beautifully mature plot, the lawns sweep gracefully around the front, side, and rear of the home, bordered by established planting and mature trees that offer both privacy and tranquility. Whether you're relaxing outdoors or entertaining guests, these delightful gardens create the ideal backdrop for all occasions.

Externally, the property also benefits from a detached garage, providing excellent storage or potential workshop space.

This is a unique opportunity to acquire a home of real character in one of the area's most desirable settings. Viewing is essential to appreciate the scale, flexibility, and charm of this impressive period home.





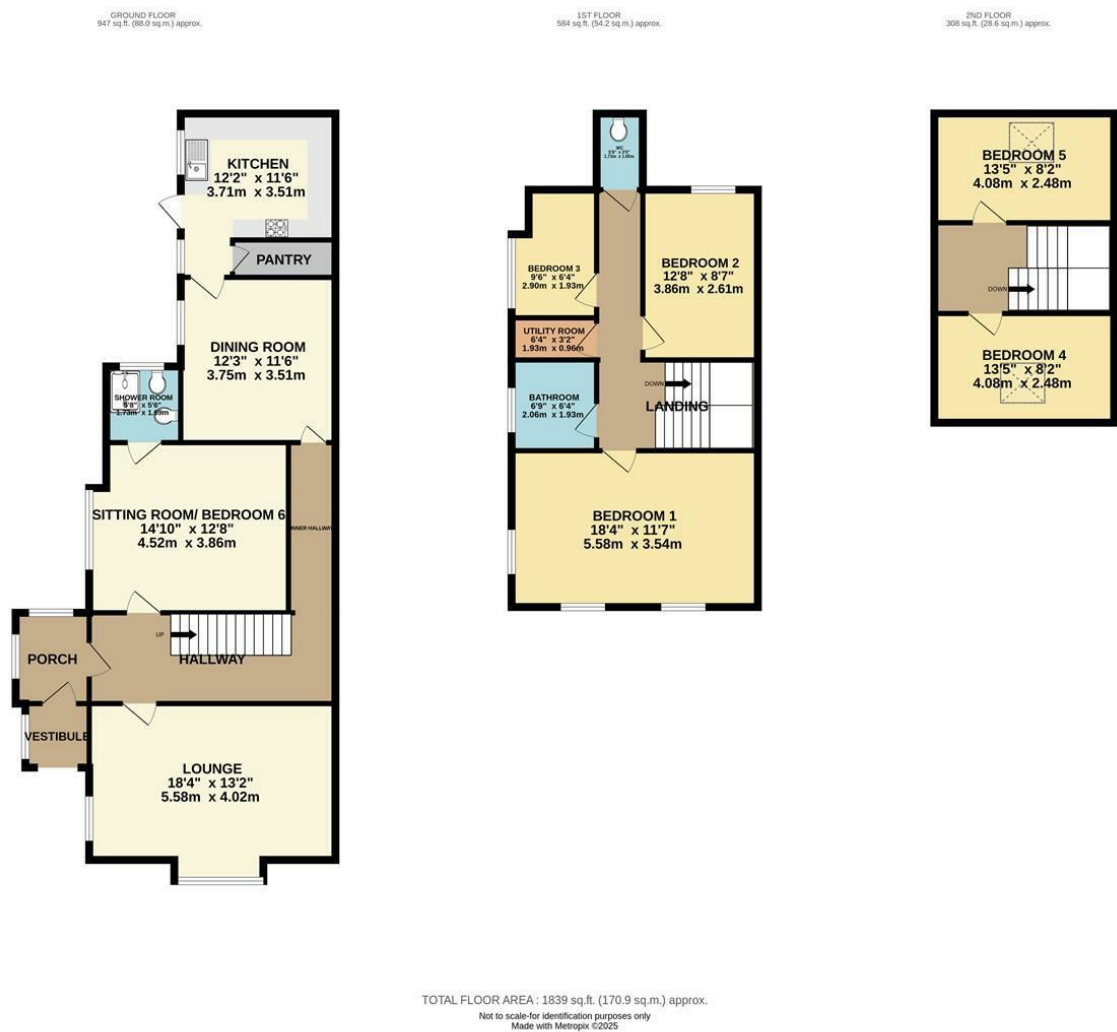












DOUGLAS
37 VICTORIA STREET
DOUGLAS
ISLE OF MAN IM1 2LF
T 01624 620606
F 01624 677363
E info@deanwood.co.im

CASTLETOWN
COMPTON HOUSE
9 CASTLE STREET CASTLETOWN
ISLE OF MAN IM9 1LF
T 01624 825995
F 01624 825996
E castletown@deanwood.co.im

RAMSEY
LEZAYRE HOUSE
87 PARLIAMENT STREET
RAMSEY ISLE OF MAN IM8 1AQ
T 01624 816111
F 01624 816588
E ramsey@deanwood.co.im

These particulars are for information purposes only. They do not constitute or form any contract nor should any statement contained herein be relied upon as a representation of fact. Neither the vendor nor DeanWood Agencies Limited ('the firm'), nor any officer or employee of the firm accept liability or responsibility for any statement contained herein. The vendor does not by these particulars, nor does the firm, nor does any officer or any employee of the firm have any authority to make or give any representation or warranty whatsoever as regards the property or otherwise. It is the sole responsibility of any person interested in the property described in these particulars to make all proper enquiries and searches to verify the description of the property and all other particulars herein.

FOR MORE PROPERTIES VISIT OUR WEBSITE @ **deanwood.im**